



ISSN: 2321-2152

IJMECE

*International Journal of modern
electronics and communication engineering*

E-Mail

editor.ijmece@gmail.com

editor@ijmece.com

www.ijmece.com

Multi Linear Regression Analysis of Geotechnical Parameters of Fine Grained Soils

C Lavanya¹ and Nandyala Darga Kumar²

¹ Professor, Department of Civil Engineering, GRIET, Hyderabad-500090

² Assistant Professor, Department of Civil Engineering, JNTUH, Telangana -505212

Abstract. Due to huge expenditure is involved in testing of soil by employing heavy machinery and costly equipment; it is necessitated to develop statistical correlations between various geotechnical parameters which can be used mostly in design of foundations and pavement constructions. Many techniques are developed for carrying out regression analysis to establish the relationships between response variable and explanatory variables as per the practice are concerned. Single linear regression analysis (SLRA) and multiple linear regression analysis (MLRA) are the modeling techniques commonly adopted to develop correlations between the required variables. The MLRA is a statistical technique that uses several explanatory variables to predict the outcome of a response variable. This paper presents the relationships established between geotechnical parameters of fine grained soils using MLRA technique. The geotechnical parameters of fine grained soils such as California Bearing Ratio (CBR), Liquid limit (LL), Plastic limit (PL), Plasticity Index (PI), Optimum Moisture Content (OMC), Maximum Dry Density (MDD), Free swell index (FSI) and % fine fraction (FF) are considered from the soil testing carried out on natural soil samples collected at different stretches of a road project in Telangana state. The MLRA showed good fits between the geotechnical parameters of fine grained soils with regression coefficients showing above 0.80. The MLRA models developed can be utilized to estimate the CBR of fine grained soils whose % fines more than 50%.

Keywords: Fine grained soil, CBR, PI, OMC, MLRA.

1 Introduction

The suitability of soil is usually evaluated before start of construction activity on it. Geographical variability in soil conditions from one location to another makes it carry out investigation for its suitability to the intended construction [1]. In geotechnical engineering design, the most essential aspect that requires to be considered involves the soil moisture content, cohesion, friction angle, unit weight, saturation degree, porosity, plasticity index and grain size distribution. These properties are important elements especially in determination of CBR, bearing capacity and slope stability in soil. Soil investigation is laborious, expensive and invasive. Therefore, an alternate quick, non-destructive and environment friendly assessment of soil properties is very crucial. Interpretations of geotechnical data will involve a degree of uncertainty. It is more difficult to acquire a reliable set of representative and undisturbed samples of the various soil strata. Geotechnical investigations are expensive and time consuming activities. Soaked CBR value of a soil sample takes about a week, making CBR test expensive, time consuming and laborious. All these problems may result in delay in

the progress of the project and lead to escalation of the project cost. To overcome these difficulties, it is imperative to predict CBR value of subgrade soil with index properties.

In order to cover the site investigation of larger area in a reduced time and cost, both geophysical and geotechnical methods appropriately conducted and the results obtained would be verified for the entire subsurface characterization. There are correlations available with high regression coefficient between P-wave values and engineering parameters of a ground such as the SPT-N values, rock quality, friction angle, velocity index, and density and penetration strength [2, 3]. Strength characteristics of the clay were correlated with various index properties [4]. Good agreement was obtained between samples and the CPT data using the new normalized charts [5]. One can use the relationships which were established between normalized shear wave velocity, normalized tip resistance, and mean grain size [6]. Multivariate regression model can be used to predict soil expansion index [7]. Based on the laboratory and field studies by employing CPT, SPT and seismic up-hole and down-hole tests, improved correlations were established for all types of penetrable soils [8]. Soil investigation is made easy by correlating the resistivity values with soil properties [9].

Empirical correlations play a key role in geotechnical engineering designs and analysis. By using appropriate empirical correlations, it is possible to derive many design parameters, thus limiting our reliance on these soil tests [10]. The relationship between CBR and water content is commonly presented in analyses [11]. Correlations were well agreed between California bearing ratio and the unconfined compressive strengths of sand- cement samples [12]. Based on the limited tests conducted, the correlations were established between CBR and soil index properties [13].

From the discussion, the correlations available between soil parameters are based on the limited testing in the laboratory and no correlations are established with respect to the % of fines. In this paper, the correlations are developed between % fines and soil index properties and with compaction characteristics. The variations of CBR with PI, OMC and MDD are presented.

2 Experimental Investigation

In order to have enough and reliable data for the target analysis, laboratory tests were conducted on soil samples obtained from different localities of the project site. A total of three hundred disturbed samples were collected within reasonable sampling intervals. Soils were collected from the respective localities at a depth of about 0.5 to 1m from the ground level after removing all the vegetation matter and were subjected to air dry as well pulverization.

2.1 Index Property Tests

In nature soil occurs in a large variety. These simplified tests which are indicative of the engineering properties of soils are called index properties. Index properties of cohesive soils are used to characterize the physical and mechanical behavior of soils by making use of parameters such as moisture content, particle size distribution, Atterberg limits and moisture density relationships. Such parameters are useful to classify cohesive soil and provide correlations with engineering soil properties.

2.2 Tests Conducted

The soil samples which were pulverized using smooth wooden hammers were stored in airtight bags under the controlled temperature in the laboratory. The laboratory tests were conducted on 130 soil samples whose % fines more than 50. All the tests mentioned in the Table 1 were conducted as per the standard test procedures given in the respective code of practice of concerned test.

Table 1. List of Tests Conducted

Name of the test	Indian Standard Test Code of Practice
Liquid Limit and Plastic Limit Test	IS: 2720 (Part V) – 1985
Heavy Compaction Test	IS: 2720 (Part VIII) – 1983
Shrinkage limit Test	IS: 2720 (Part VI) – 1972
California Bearing Ratio Test	IS: 2720 (Part XVI) – 1987
Free Swell Index Test	IS: 2720 (Part XL) – 1977
Sieve Analysis	IS: 2720 (Part IV) - 1985

3 Results and Discussion

The obtained laboratory results pertinent to index properties, CBR and compaction characteristics such as OMC and MDD were analyzed using statistical analysis such as multi linear regression analysis (MLRA). The discussion of results and correlations are presented in the following sections.

3.1 Single Linear Regression Analysis (SLRA)

Fig.1 presents the variation of CBR with the OMC. From this figure, it is noticed that as the OMC increases the CBR is decreasing and for the soil samples of OMC from 20 to 26, the range of CBR is 3 to 1%. The correlation between % CBR and OMC is presented in equation below. It has regression coefficient, $R^2 = 0.736$.

$$CBR = -0.465(OMC) + 12.57$$

CBR and OMC are in %.

Fig.2 presents the variation of CBR with the MDD. From this figure, it is noticed that as the MDD increases the CBR is increasing and for the soil samples of MDD from 11 to 14 kN/m^3 , the range of CBR is 1 to 3%. The correlation between % CBR and MDD is presented in equation below. It has regression coefficient, $R^2 = 0.806$.

$$CBR = 0.688(MDD) - 6.985$$

CBR in % and MDD in kN/m^3 .

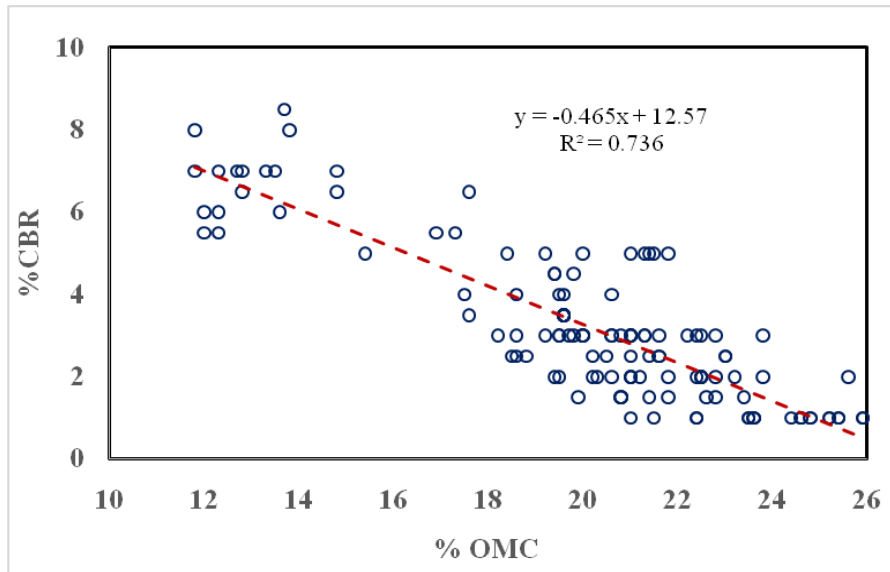


Fig. 1. Variation of CBR with OMC

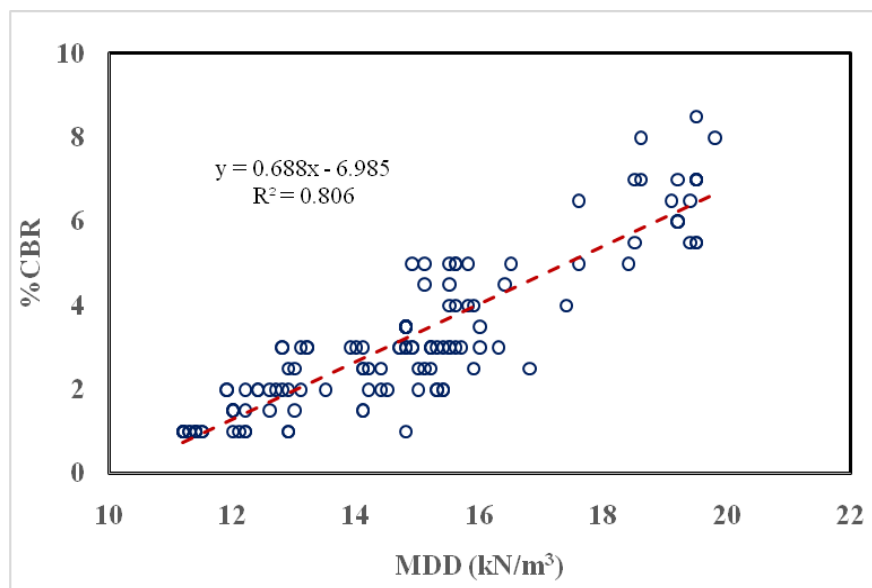


Fig. 2. Variation of CBR with MDD

3.2 Multiple Linear Regression Analysis (MLRA) Models for CBR

The goal of multiple linear regression (MLR) is to model the linear relationship between the explanatory (independent) variables and response (dependent) variable. Multiple regression is the extension of ordinary least-squares (OLS) regression that involves more than one explanatory variable. Multiple linear regression attempts to model the relationship between two or more explanatory variables and a response variable by fitting a linear equation to observed data. In words, the model is expressed as below

$$\text{DATA} = \text{FIT} + \text{Residual}$$

where the "FIT" term represents the expression $y = a_0 + a_1x_1 + a_2x_2 + \dots + a_px_p$.

3.2.1 MLRA Model for CBR with LL, PL and PI

The below equation presents the MLRA model for CBR with LL, PL and PI. CBR is the response variable and LL, PL and PI are the explanatory variables. From this equation it is noticed that the CBR is more sensitive with the PL and with PI no response. The corresponding R^2 as attained was 0.77.

$$CBR = -0.473LL + 0.358PL + (0)PI + 19.27$$

3.2.2 MLRA Model for CBR with LL, PL, PI, MDD and OMC

The below equation presents the MLRA model for CBR with LL, PL, PI, MDD and OMC. CBR is the response variable and LL, PL, PI, OMC and MDD are the explanatory variables. From this equation it is noticed that the CBR is more sensitive with the MDD and not at all responsive with PI. The corresponding R^2 as attained was 0.84.

$$CBR = -0.172LL + 0.128PL + (0)PI + 0.363MDD - 0.080OMC + 5.404$$

3.2.5 MLRA Model for CBR with MDD, OMC and PI

The below equation presents the MLRA model for CBR with MDD, OMC and PI. CBR is the response variable and MDD, OMC and PI are the explanatory variables. From this equation it is noticed that the CBR is more sensitive with the MDD. The corresponding R^2 as attained was 0.83.

$$CBR = 0.404MDD - 0.089OMC - 0.172PI + 3.51$$

4 Conclusions

Multi linear regression analysis carried out between the index properties, compaction characteristics and CBR showed good correlations. The regression coefficient, R^2 values for most of the cases is found to be above 0.8. MDD and OMC of fine grained soils obtained for whose % fines are more than 50%. From the MLR analysis, the equations established showed that the CBR is sensitive with the MDD. The statistical correlations as established above from the MLR analysis can be utilized to obtain CBR for fine grained soil sub grades.

References

1. Charman, J H.: Laterite in road pavements. Construction Industry Research and Information Association, London (1988).
2. Bery, A.A. & Saad, R.: Correlation of Seismic P-wave Velocities with Engineering Parameters (N Value and Rock Quality) for Tropical Environmental Study, International Journal of Geosciences, 3, pp. 749- 757 (2012).

3. Akintorinwa, O.J and Adesoji, J.I: Application of Geophysical and geotechnical investigations in Engineering site Evaluation. International Journal of physical sciences, Vol. 4 (8). pp 443-454 (2009).
4. Springman, S. S., Trausch, J. G., Heil, H. M., and Heim, R.: Strength of soft Swiss lacustrine clay: Cone penetration and triaxial test data. Transportation Research Record, Vol. 1675, No. 1675, pp. 1–9 (1999).
5. P. K. Robertson: Soil classification using the cone penetration test, Canadian Geotechnical Journal, 1990, 27(1): 151-158 (1990).
6. Mourad Karray, Guy Lefebvre, Yannic Ethier, Annick Bigras: Influence of particle size on the correlation between shear wave velocity and cone tip resistance, Canadian Geotechnical Journal, 2011, 48(4): 599-615 (2011).
7. Fekerte Arega Yitagesu, Freek van der Meer, Harald van der Werff and Hadush Seged: Evaluation of Soil Expansion Index from Routinely Determined Geotechnical Parameters, Soil Science Society of America Journal Abstract - Soil Physics, Vol.75 No. 5, p. 1640-1651 (2011).
8. A.Anagnostopoulos, George Koukis, N. Sabatakakis and George Tsiambaos : Empirical correlations of soil parameters based on Cone Penetration Tests (CPT) for Greek soils. Geotechnical and Geological Engineering, 21(4):377-387 (2003).
9. His yam Jusoh and Syed Baharom Syed Osman: The Correlation between Resistivity and Soil Properties as an Alternative to Soil Investigation. Indian Journal of Science and Technology, Vol 10(6), DOI: 10.17485/ijst/2017/v10i6/111205, (2017).
10. Jay Ameratunga, Nagaratnam Sivakugan and Braja M. Das: Correlations of Soil and Rock Properties in Geotechnical Engineering, A Text Book January 2016, DOI 10.1007/978-81-322-2629-1, ISSN 2364-5156, Springer Publisher (2015).
11. Yusep Muslih Purwana , Hamid Nikraz: The Correlation between the CBR and Shear Strength in Unsaturated Soil Conditions , International Journal of Transportation Engineering, Vol.1/ No.3/ Winter 2014, pp.211-222 (2014).
12. D.B.Eme, T.C Nwofor and S. Sule: Correlation between the California Bearing Ratio (CBR) and Unconfined Compressive Strength (UCS) of Stabilized Sand-Cement of the Niger Delta, SSRG International Journal of Civil Engineering (SSRG - IJCE), V3(2),7-13 March 2016. ISSN:2348 – 8352 (2016).
13. Okon Bassey Bassey, Imoh Christopher Attah, Edidiong Esem Ambrose, Roland Kufre Etim: Correlation between CBR Values and Index Properties of Soils: A Case Study of Ibiono, Oron and Onna in Akwa Ibom State. Resources and Environment p-ISSN: 2163-2618, e-ISSN: 2163-2634, 7(4): 94-102 (2017).