



ISSN: 2321-2152

IJMECE

*International Journal of modern
electronics and communication engineering*

E-Mail

editor.ijmece@gmail.com

editor@ijmece.com

www.ijmece.com

Several Reactions Taguchi L9 orthogonal array and Grey relational analysis were used to optimise machining settings for turning AA 6063 T6 aluminium alloy

CHINTA SEKHAR^{1,2,3,4}, Dr MADDU MALA RAMAKOTAIAH^{1,2,3,4}, M PRAVEEN KUMAR^{1,2,3,4}, T. DASTHAGIRI^{1,2,3,4}

ABSTRACT

With numerous responses established on Taguchi L9, orthogonal array coupled with current work proposes a novel methodology for optimizing machining parameters on turning of AA 6063 T6 aluminum alloy. Experimental assessments are accomplished on AA 6063 T6 aluminum alloy. Turning trials are carried out under dry cutting conditions using an uncoated carbide insert. Cutting parameters such as cutting speed, feed rate, and depth of cut are optimized in this effort while numerous responses such as surface roughness(Ra) and material removal rate are taken into consideration (MRR). From the grey analysis, a grey relational grade(GRG) is calculated. The optimal amounts of parameters have been identified based on the values of grey relational grade, and then ANOVA is used to determine the significant influence of parameters. To authenticate the test result, a confirmation test is executed. The result of the experiments shows that by using this method, the turning process responses can be significantly improved.

Keywords : Material Removal Rate, ANOVA, Taguchi Method, Grey Relation Analysis, S/N ratio

INTRODUCTION

It has always become difficult for Manufacturing Industries to produce products conveniently with high quality and higher production rates to remain in the competitive world. The desired shape, size of the product can be achieved by the process called turning, which is performed by rotating parts that rotate the workpiece and the cutting tools which cut the unwanted material to get our desired shape which is done by using Lathe machines. Turning is important and widely used in engineering industries. Surface roughness, often known as roughness, is a characteristic of surface texture. The deviations in the direction of a real surface's normal vector from its ideal form are used to quantify it. The surface is rough if these variances are considered, the surface is smooth if they are minimal roughness is often

thought of as the high frequency, short wavelength component of a measured surface in the surface metrology. At the same time, industries need a higher material removal rate(MRR) so that they can raise the production rate while maintaining high quality. Increases in process parameters such as cutting speed, feed, and depth of cut might result in all high MRR. High cutting speeds require more power, which may be greater than the machine tool's capacity. At the same time, as the process parameters are increased, the cutting temperature rises. Therefore selecting the appropriate process parameters plays a vital role in the effectiveness, efficiency, and overall economy of manufacturing by machining industries to achieve these objectives (higher MRR and product quality).

*Professor^{1,2,3,4}, Assistant professor^{1,2,3,4},
Department of Mechanical Engineering,
Pallavi Engineering College,*

*Kuntloor(V), Hayathnagar(M), Hyderabad, R.R.Dist.-501505
sekharresonance1975@gmail.com, praveenmunnangi009@gmail.com.*

In turning, parameters like cutting speed, feed rate, and depth of cut affect surface finish, roundness and MRR. Choudhury and Bartarya [5] focused on the design of experiments and the neural network for the prediction of tool wear. The input parameters were cutting speed, feed, and depth of cut; flank wear, surface finish, and cutting zone temperature were selected as outputs. Taguchi method is applied for finding out the optimal value of surface roughness under the optimum cutting condition in turning SCM 440 alloy steel. The experiment was designed by using the Taguchi method and experiments were conducted and results thereof were analyzed with the help of the ANOVA (Analysis of Variance) method [13]. The orthogonal array of Taguchi method coupled with grey relational analysis considering three parameters viz. speed, cutting depth, feed rate for optimizing two responses: surface roughness, and material removal rate in precision turning. The MINITAB software was explored to analyze the mean effect of the Signal-to-Noise (S/N) ratio to achieve the multi-objective features [16]. A grey relational grade is determined to evaluate the multiple responses. In the present study, experimental details using the Taguchi method of parameter design have been employed for optimizing multiple performance characteristics such as surface roughness, roundness, and MRR for turning AA 6063 T6. Further, for the optimization of multiple response characteristics, grey relational analysis was used.

II. MATERIAL SPECIFICATION

AA 6063 T6 has a composition of 0.6 wt.% Si, 0.34 wt.% Fe, 0.09 wt.% Cu, 0.09 wt.% Mn, 0.88 wt.% Mg, 0.092 wt.% Cr, 0.095 wt.% Zn, 0.092 wt.% Ti, 97.721 wt.% Al. This metal is commonly used to make doors, extrusion, window frames, and irrigation tubing. CNC lathe was used for machining. The tool used is an uncoated carbide insert tool. The specification of the cutting tool is DCGT 11 T3 04. The surface roughness was measured using the Surfcomer SE 1200, Surface profilometer. The machining was done under dry-cutting conditions

II. EXPERIMENTAL WORK

The trials with three parameters and three levels were designed using Taguchi's L9 orthogonal array. Experiments were conducted based on Taguchi's method which is a powerful tool used in the design of experiments. Taguchi advocates the use of orthogonal array designs to assign the factors chosen for the experiment. The advantage of the Taguchi method is that it uses a special design of orthogonal arrays to

study the entire parameter space with only a small number of experiments. Compared to the conventional approach of experimentation, this method reduces drastically the number of experiments that are required to model the response functions. Table(1) shows the levels assigned to the factors as well as the various parameters used. The experimental results for the L9 orthogonal array are given in

RESULTS AND DISCUSSION

Multi-Response Optimization Using GRA Taguchi's technique is sufficient for determining the best process parameter settings for a single response characteristic. Multi-response optimization using GRA is the preferred strategy when there are two or more responses with dissimilar quality attributes. Grey analysis can also be utilized to determine the similarity between seemingly irregular finite data. As a result, the following GRA procedures are used to achieve multi-response optimization of wear parameters in this work.

Grey Relational Generation

The role of the factors is ignored in GRA when the standard value and reference sequence range are both quite large. GRA may also produce erroneous results if the goals and directions of the factors are incompatible. As a result, data pre-processing is carried out to normalize the original reference sequences to a comparable sequence in the range of zero to one. This method of pre-processing data into a group of sequences is known as grey relational generation. When using GRA to preprocess data, the response of the transformed sequence can be divided into two quality characteristics, namely larger-the-better or smaller-the-better. For smaller-the-better characteristic, the sequence can be normalized using Equation (1):

$$x_i^*(k) = \frac{\max y_i(k) - y_i(k)}{\max y_i(k) - \min y_i(k)} \quad (1)$$

Where $x_i^*(k)$ denotes the reference sequence after pre-processing for the i th experiment and $y_i(k)$ represents the initial sequence of the mean of the responses.

Computation of Grey Relational Coefficient and Grade Once the sequence is normalized, the next step is to calculate the deviation sequence of the reference sequence using Equation (2):

$$\Delta_{0i}(k) = |x_0^*(k) - x_i^*(k)| \quad (2)$$

where $\Delta_{0i}(k)$, $x_0^*(k)$ and $x_i^*(k)$ refer to the deviation, refer to the deviation, reference, and comparability sequences, respectively. The grey relational coefficient (GRC) is then determined using Equation

$$\xi_i(k) = \frac{\Delta_{min} + \zeta \Delta_{max}}{\Delta_{0i}(k) + \zeta \Delta_{max}} \quad (3)$$

where, $\xi_i(k)$ signifies the GRC of individual response variables computed as a function of Δ_{min} and Δ_{max} , the minimum and maximum deviations of each response variable. The distinguishing or identification coefficient represented by ζ , defined in the range $\zeta \in [0, 2.5]$, is generally set at 0.5 to allocate equal weights to every parameter. As shown in Equation (4), a composite grey relational grade (GRG), is then computed by averaging the GRC of each response variable:

$$\gamma_i = \frac{1}{n} \sum_{i=1}^n \xi_i(k) \quad (4)$$

where γ_i represents the value of GRG determined for the i th experiment, n being the aggregate count of performance characteristics. Once the optimal level of the factors is determined using GRG, the final step is to predict and verify the quality characteristics using Equation

$$\gamma_{predicted} = \gamma_m + \sum_{i=1}^q \gamma_0 - \gamma_m \quad (5)$$

Where γ_0 denotes the maximum of average GRG at the optimal level of factors and γ_m represents the mean GRG. The quantity q indicates the number of factors affecting the response value. An order of 1 is allotted to the greatest grey relational grade. Grey relational grades are calculated using Eq. (4) and grey relational order was figured out in the table(3). From table(2), we come to know that the control parameter's setting of 2(experiment 2) had the greatest grey relational grade and this indicates that experiment 2 was the optimal turning factor setting for minimum surface roughness and MRR simultaneously among the chosen nine experiments. The larger better S/N quality characteristics were considered for the grey relational grade since higher multiple performance characteristics are our target. The ideal level of a parameter is the one with an S/N ratio. So the optimal process parameter setting for the multiple performance characteristics was N1f2d2.

Method:

To reduce variance and optimize process parameters, the Taguchi method uses orthogonal arrays. The signal-to-noise(S/N)ratio is used as a performance characteristic in the Taguchi method to assess process robustness and deviation from desired values. The S/N ratio is a logarithmic function that is calculated by dividing the signal (mean) by the noise (standard deviation). To diminish noise and the effects of uncontrollable factors, higher values of S/ N ratios are preferred. High S/ N ratios indicate the improved quality of the product. There exist three types of S/ N ratios, namely, higher-the-better, nominal-the-best, and smaller-the-better as shown in Equations (6)–(8):

$$\left(\frac{S}{N}\right)_{HTB} = -10 * \log_{10} \left(\frac{1}{n} \sum_{i=1}^n \frac{1}{y_i^2} \right) \quad (6)$$

$$\left(\frac{S}{N}\right)_{NTB} = -10 * \log_{10} \left(\frac{1}{n} \sum_{i=1}^n y_i^2 \right) \quad (7)$$

$$\left(\frac{S}{N}\right)_{STB} = -10 * \log_{10} \left(\frac{1}{n} \sum_{i=1}^n y_i^2 \right) \quad (8)$$

where n is the number of experiments, y_i represents the response value of the i th experiment in the OA, \bar{y} indicates the mean, and s^2 the variance of the observed data.

Analysis of Variance(ANOVA)

ANOVA is conventionally used to investigate whether the experimental design parameters have a significant effect on the responses. The ANOVA table is also commonly used to examine the interactions between variables. In general, the F-test is used to assess the extent to which factors influence test results. This table provides the order of most influencing factor in determining the multiple performance characteristics or Grey relational Grade. The Depth of cut is the 1st influencing factor which has the highest mean of GRG at Level-2. So the depth of cut has Rank 1 in the table. The Spindle speed is the 2nd most influencing factor which has the highest mean of GRG at Level-1. So the spindle speed has Rank 2 in the table. The Feed rate is the 3rd most influencing factor which has the highest mean of GRG at Level-2. So the feed rate has Rank 3 in the table. The main effects plot for the mean for GRG is shown in Fig 1. The main effects plot for GRG for Data Means was created in Minitab for each value of a categorical variable. Each variable's points are connected by a line. Look at the line to determine whether the main effect is present for a categorical variable. The Response Table for Signal-to-Noise Ratios contains a row for the average signal-to-noise ratio for each factor level, Delta, and Rank. Each factor has its column in the table. Each factor level. Delta and Rank have a row in the Response Table for Standard Deviations that contains the average signal-

to-noise ratio. Each factor has its column in the table. Delta is the difference between the maximum and minimum average response (signal-to-noise ratio or standard deviation) for the factor. The Rank is the rank of each Delta, where Rank 1 is the largest Delta. The larger, better S/N quality characteristics were considered for the grey relational grade since higher multiple performance characteristics are our target. The optimal level is the level of a parameter with the highest S/N ratio

The main effects plot for the S/N ratio for GRG is shown in Fig 2. In these results, the main effects plot for the S/N ratio indicates that Depth of Cut has the largest effect on the signal-to-noise ratio. On average, experimental runs with the depth of cut at level 2 had much higher signal-to-noise ratios than experimental runs with the depth of cut at levels 1 & 3. Feed Rate had a small effect or no effect on the signal-to-noise ratio.

Estimated coefficients using uncoded units

Minitab displays the coefficients in uncoded units in addition to coded units if the two units differ. For each term in the model, there is a coefficient. These coefficients are useful to construct an equation representing the relationship between the response and the factors. Thus, the finest combination values for maximizing the multiple performance characteristics or grey relational grade (GRG) were spindle speed of 2000 rpm, feed rate of 0.05 mm/rev, and depth of cut of 0.15 mm. The response table for the means of grey relational grade is shown in Table (4). The response table for the S/N ratios of grey relational grade is shown in Table (5). ANOVA output of the multiple performance characteristics is given in Table (6). From the analysis of this table, it could be concluded that depth of cut, spindle speed followed by feed rate, and, are significantly affecting the grey relational grade.

G. Graphs

1) Normal Probability Plot A graph

is plotted between the residuals versus their expected values when the distribution is normal. The analysis residuals should be regularly distributed. In practice, for balanced or nearly balanced designs or data with a large number of observations, moderate departures from normality do not seriously affect the results. The normal probability plot of the residuals should roughly follow a straight line.

2) Residuals versus fits

A graph is plotted between the residuals versus the fitted values. The residuals should be scattered randomly about zero. Shown in Fig 4.

Results of Confirmation Experiment for GRG :

The purpose of this confirmation experiment is to verify the improvement in the quality characteristics. After determining the optimal level, the following equation can be used to forecast the best response

$$\gamma_{predicted} = \gamma_m + \sum_{i=1}^q \gamma_0 - \gamma_m$$

where γ_m is the total mean S/N ratio, γ_0 is the mean S/N ratio at an optimal level, n is the number of main design parameters that affect the quality characteristics. Based on Eq (9) the grey relational grade (GRG) is predicted for the optimal combination of parameters (N1-f2-d2) and its value is 0.7184. Lastly, a confirmation test was conducted using the optimum combination of parameters (N1-f2-d2). Table (7). shows the comparison of predicted multiple performance characteristics (GRG) with the actual one. The grey relational grade for the confirmation experiment is found to be 0.7640. The results of the confirmation experiment have been done for a different level of cutting parameters which are Initial and Optimal Cutting parameters. The initial cutting parameters are taken as N1f1d1 which is the 1st experiment condition and Optimal cutting parameters are taken as N1f2d2 which is the optimal process parameter setting for the multiple performance characteristics. The Prediction value of GRG and S/N ratio are 0.7184 and -2.76601 respectively with the lower spindle speed of 2000 rpm, lower feed rate of 0.05 mm/rev, and medium depth of cut of 0.15 mm with the estimated multiple performance characteristics (GRG). The Experimental value of GRG and S/N ratio are 0.7640 and -2.4271 respectively of parameter setting N1f2d2. The percentage of error between the predicted and experimental values of the multiple performance

characteristics during the confirmation experiments is almost within 5.96%. So, we can say the improvement in quality characteristics has been verified by a confirmation experiment. The improvement in the S/N ratio from the initial cutting parameters to the optimal cutting parameters is calculated by the difference of them, i.e., $5.229 - 2.4271 = 2.8019$ dB for GRG.

Figures and Tables:

TABLE I. MACHINING PARAMETERS

Machining Parameters					
Sno	Factors	Symbol	Level 1	Level 2	Level 3
1	Spindle Speed (rpm)	N	2000	3500	5000
2	Feed Rate (mm/rev)	F	0.05	0.075	0.1
3	Depth of Cut (mm)	D	0.1	0.15	0.2

Design of Experiments					
Sno	N	F	d	Ra	MRR
1	2000	0.05	0.1	0.380	0.2123
2	2000	0.075	0.15	0.360	0.4302
3	2000	0.1	0.2	0.535	0.6872
4	3500	0.05	0.15	0.388	0.3865
5	3500	0.075	0.2	0.509	0.6872
6	3500	0.1	0.1	0.533	0.5208
7	5000	0.05	0.2	0.459	0.5821
8	5000	0.075	0.1	0.469	0.4899
9	5000	0.1	0.15	0.556	0.8531

Exp. No.	Normalization		Deviation Sequence		Grey Relational Coefficient -GRC		Grey Relational Grade -GRC	Rank Order
	Ra	MRR	Ra	MRR	Ra	MRR		
1	0.89796	0.00000	0.10204	1.00000	0.83051	0.33333	0.58192	4
2	1.00000	0.34004	0.00000	0.65996	1.00000	0.43105	0.71553	1
3	0.10714	0.74110	0.89286	0.25890	0.35897	0.65885	0.50891	7
4	0.85714	0.27185	0.14286	0.72815	0.77778	0.40712	0.59245	3
5	0.23980	0.74110	0.76020	0.25890	0.39676	0.65885	0.52781	5
6	0.11735	0.48143	0.88265	0.51857	0.36162	0.49088	0.42625	9
7	0.49490	0.57709	0.50510	0.42291	0.49746	0.54177	0.51961	6
8	0.44388	0.43321	0.55612	0.56679	0.47343	0.46870	0.47106	8
9	0.00000	1.00000	1.00000	0.00000	0.33333	1.00000	0.66667	2

TABLE IV. RESPONSE TABLE FOR MEANS

	Initial Cutting Parameters	Optimal Cutting Parameters	
Level	N1 f1 d1	N1 f2 d2	
		Prediction	Experiment
GRG	0.5819	0.7184	0.7640
S/N Ratio	-5.229	-2.76601	-2.4271

Average mean = 0.55669

TABLE V. RESPONSE TABLE FOR S/N RATIOS

Larger is better

Level	N	F	D
1	0.6021	0.5647	0.4931
2	0.5155	0.5715	0.6582
3	0.5524	0.5339	0.5188
Delta	0.0866	0.0375	0.1651
Rank	2	3	1

Level	N	F	D
1	-4.492	-4.979	-6.216
2	-5.835	-4.999	-3.659
3	-5.249	-5.599	-5.701
Delta	1.342	0.620	2.557
Rank	2	3	1

Source	D F	Adj SS	Adj MS	F-Value	P-Value	Percentage Contribution(%)
N	2	0.011335	0.005667	1.63	0.0381	16.65
F	2	0.002398	0.001199	0.34	0.0744	3.52
D	2	0.047372	0.023686	6.79	0.0128	69.58
Error	2	0.006972	0.003486			
Total	8	0.068076				

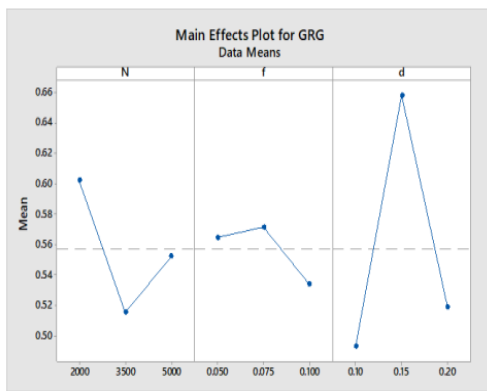


Fig 1: Mean Effect plot for GRG

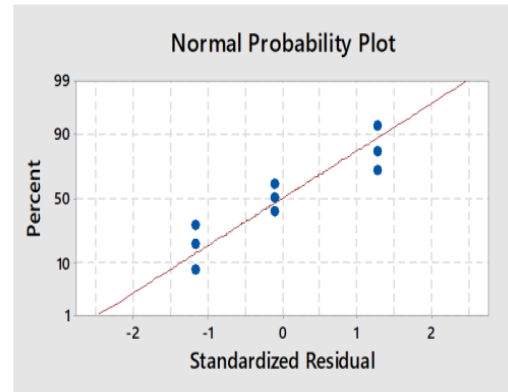
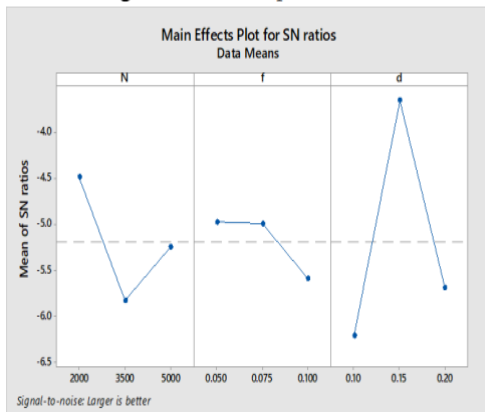


Fig 3: Normal Probability Plot

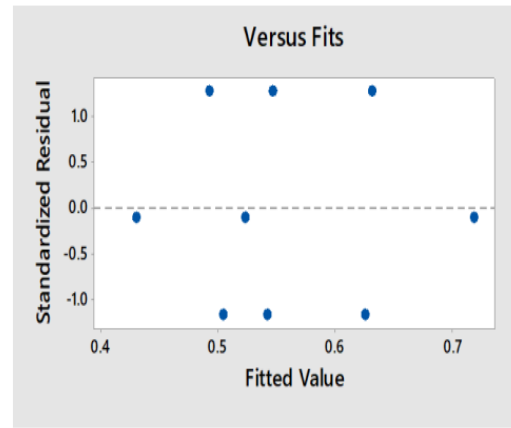


Fig 4: Versus Fits

CONCLUSION

The surface roughness (Ra) and material removal rate (MRR) were measured under different cutting conditions for diverse combinations of machining parameters. The conclusions arrived, at the end of this work are as follows: 1. From this analysis, it is revealed that depth of cut and spindle speeds are prominent factors that affect the turning of aluminum alloy. The depth of cut ($p=69.58\%$) is the most influencing factor in determining the multiple performance characteristics or grey relational grade (GRG) followed by spindle speed ($p=16.65\%$) and feed rate ($p=3.52\%$). 2. The best multiple performance characteristics were obtained with an uncoated carbide insert when turning aluminum alloy with the lower spindle speed of 2000 rpm, lower feed rate of 0.05 mm/rev, and medium depth of cut of 0.15 mm with the estimated multiple performance characteristics (GRG) of 0.7184. The experimental value of GRG for this combination of parameters is 0.7640. 3. The percentage of error between the predicted and experimental values of the multiple performance characteristics during the confirmation experiments is almost within 5.96%. 4. The

improvement in the S/N ratio from the initial cutting parameters to the optimal cutting parameters is 2.8019 dB for GRG. 5. The value of multiple performance characteristics obtained from the confirmation experiment is within the 95% confidence interval of the predicted optimum condition.

Reference

[1]. Dr. Arvind Chaudhari "A Study of facilities provided by Maharashtra State Road Transportation Corporation at Bus station to passengers in Maharashtra" vol.3 issue 4. April 2015- 43

[2]. Dr. Prakash Vishnu Pise "Study of Quality Services provided by MSRTC with special reference to Pune division" Bulletin Monumental, vol 21 issue 7 2020, <http://bulletinmonumental.com/>.

[3]. Madhuri Rahatgaonkar, Mayura Mathankar "A study of passenger satisfaction in Maharashtra State Road Transportation Corporation in Amravati District" IJETR, Vol 6 Issue 4 Dec 2014.

[4]. Miss. Naziya Maldar "Maharashtra State Road Transportation Corporation (MSRTC, India): A study of issues and challenges" UGC Care Journal, Vol: 44, NO. 01(XX), Jan.-March (2021)

[5]. Dr. Urmila Vikas Patil "Analytical Study on Problems of Maharashtra State Road Transportation Corporation" JETIR, Volume 5 Issue 5, May 2018.

[6]. Kurtulmuşoğlu FB, Pakdil F, Atalay KD. Quality improvement strategies of highway bus service based on a fuzzy quality function deployment approach. Transp A Transp Sci 2016;12:175–202

[7]. Filipović S, Tica S, Živanović P, Milovanović B. Comparative analysis of the basic features of the expected and perceived quality of mass passenger public transport service in Belgrade. Transport 2009; 24:265–73.

[8]. Rao KCA, Thakar G, It M. Enhancement of Customer Satisfaction by QFD in Bus Service 2013:202–5

Cite this article as:

Prof. Sunil R. Kewate, Prof. Vivek R. Gandhewar, Miss. Vaishnavi R. Holey, "Survey Analysis for Quality Enhancement of MSRTC Bus Station - A Review Research", International Journal of Scientific Research in Science and Technology (IJSRST), Online ISSN: